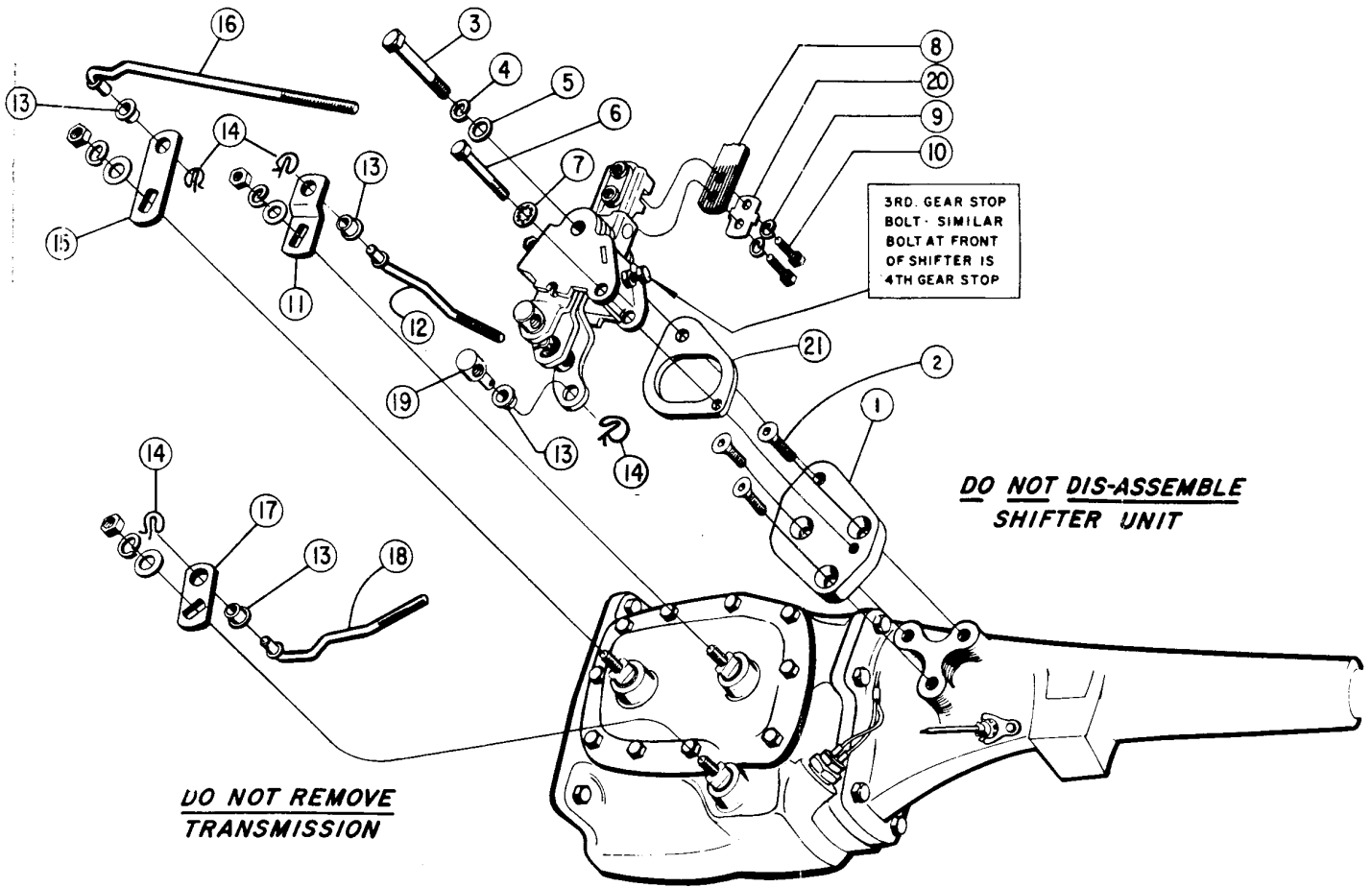




# COMPETITION/PLUS<sup>®</sup>

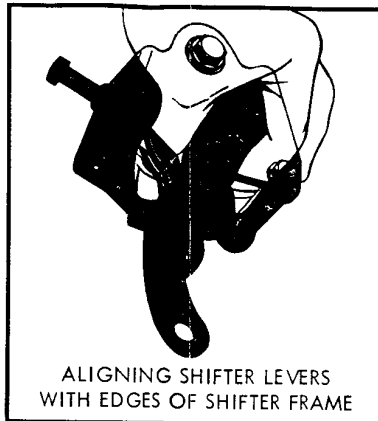
## FOUR SPEED FLOOR SHIFT



### CONTENTS OF KIT

- |  |             |
|--|-------------|
| 1. Mounting Plate                      | 1956348     |
| 2. 3/8 - 16 x 1 Flat Head Socket Screw | (3)         |
| 3. 7/16 - 14 x 3 Bolt                  |             |
| 4. 7/16" Split Lockwasher              |             |
| 5. 7/16" Flat Washer                   |             |
| 6. 3/8 - 16 x 3 Bolt                   |             |
| 7. 3/8" Internal Tooth Lockwasher      |             |
| 8. Stick Bolt On                       |             |
| 2916550                                | 2384077     |
| 2916551                                | 2384078     |
| 2916558                                | 2384084     |
| 9. 3/8" Split Lockwasher               | (2)         |
| 10. 3/8 - 16 x 7/8 Bolt                | (2)         |
| 11. Arm 1st/2nd                        | 1053894     |
| 12. Rod 1st/2nd                        | 2134164     |
| 13. Nylon Bushing                      | 1181681 (6) |
| 14. Spring Clip                        | 1272412 (6) |
| 15. Arm 3rd/4th                        | 1053831     |
| 16. Rod 3rd/4th                        | 2133880     |
| 17. Arm Reverse                        | 1052445     |
| Early                                  | 1053667     |
| Late                                   | 2133189     |
| 18. Rod Reverse                        | 1193783 (3) |
| 19. Rod Adjusting Button               | 1955271     |
| 20. Stiffener Plate                    | 1954319     |
| 21. Spacer Plate                       | 1544088     |
| 22. Bagged Hardware                    |             |

# 373 4089



291 6550 STICK PT. 238 4077

291 6551 STICK PT. 238 4078

291 6558 STICK 238 4084

NOTE  
Stick - Pt. 238 4084 is offset 4" to the right side. The other two sticks are not offset.

HURST COMPETITION PLUS<sup>®</sup> FLOOR SHIFT  
CHRYSLER NEW PROCESS FOUR SPEED TRANS. SHION